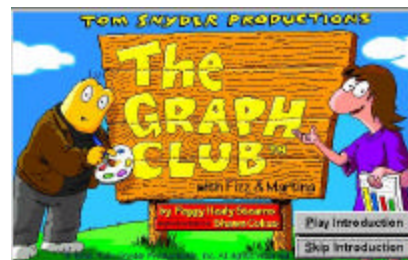


# Using Graph Club



To begin the program, double click on the desktop shortcut for graph club. (If the shortcut isn't there or you would rather, you can also begin the program by clicking on the Start Menu, then Programs.)

The first screen you will encounter is the Introduction screen. On this screen, simply click the "Skip Introduction" button to proceed into the program.



Next, the main menu screen will be displayed. It contains four options that will be explained in more detail. You can click on one of the button and then click on the OK button OR you can double click on the button for the section you wish to use.

## Explore

This section is great for students to get comfortable with the basics of using the program. It will open a double-paned window with two blank graphs.

Click here for help!

Click on this to change it!

Clicking on these buttons will allow you to change to picture to a text description.

Click on this to change it!

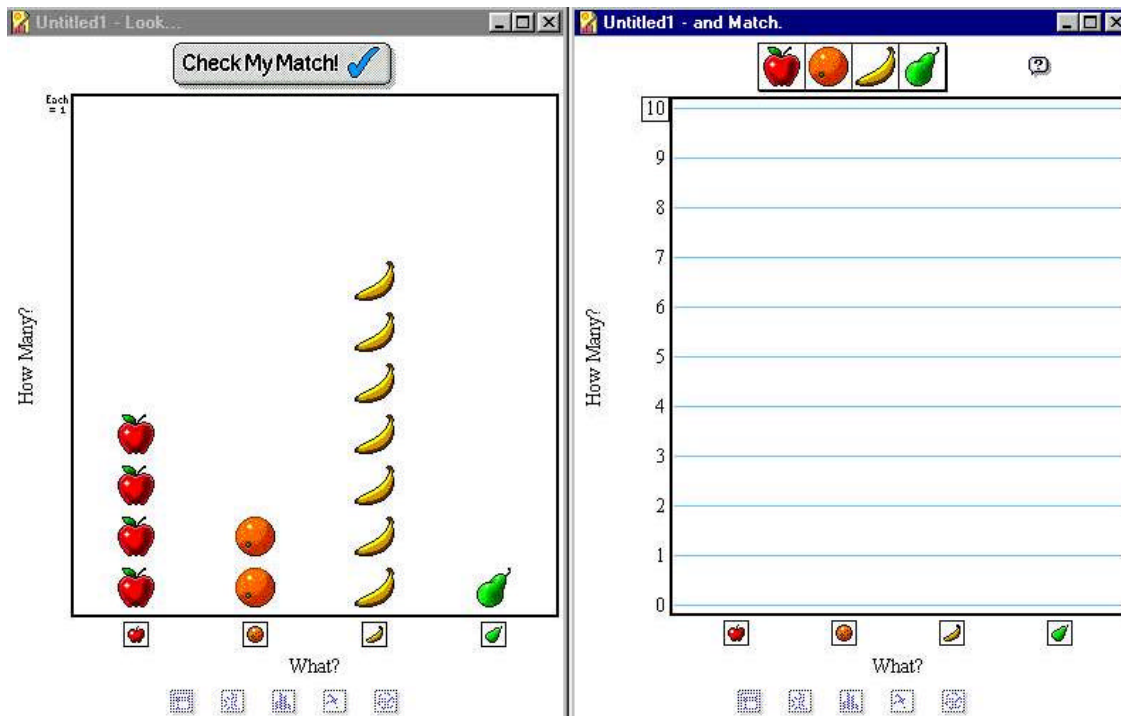
Drag these symbols down to the correct sections in either graph to increase that item's total.

Clicking here will let you change the maximum scale for the graph. (Note – picture graphs can only go to 20!)

These buttons allow you to view different types of graphs for the same data.

## Match

This section of the program will allow students to practice using their “graph-reading” skills.



On this screen, the object is to make the graph on the left match the one on the right.

Students will click and drag the appropriate numbers of each item to the correct column in the left graph.

When they think they have exactly duplicated the graph on the right, they click on the “Check My Match” button. A red check mark will be placed under all items that match. Ones that do not match will be left blank!

In this section, students cannot change to other types graphs, but they can still change the axis labels and change the pictures at the bottom to words!

## Guess

This section is included as a critical / creative thinking activity. The program will randomly generate general graphs and then students could “Guess” what this graph might represent.

When the screen comes up it will show only one graph, but students can switch to different types of graphs and change the labels.

# Create

This is the section that you will probably use the most! It is where students will create graphs. The screen below will be brought up. This is Table view. Here students will enter the numbers for the items they wish to graph.

Clicking on any symbol will allow you to change it to a work.

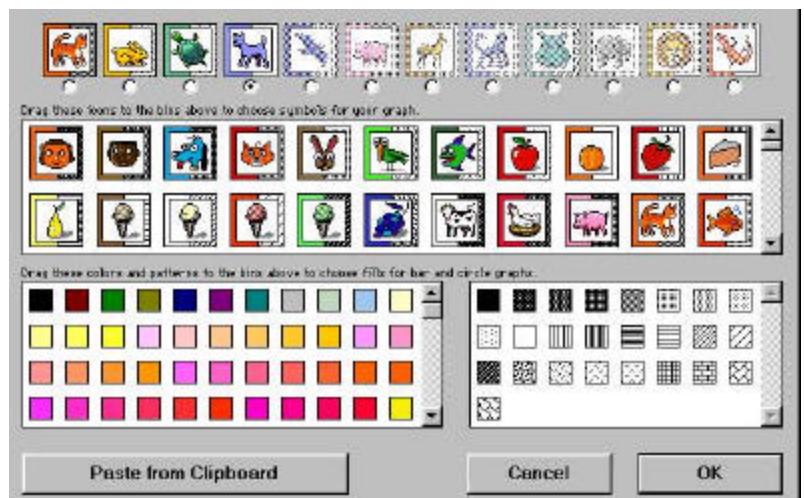
Clicking on any of the zeroes will allow you to enter a number.

In this view these are disabled and cannot be used to change the type of graph

Before actually entering the numbers as show above, it makes more sense to change the symbols to represent whatever is being graphed!

Shown to the right is the Choose Symbols dialog box. To get to it, click on the *Graph* menu, then the *Choose Symbols* command.

Once here, locate the picture you want to use in the middle section and then click and drag it to the correct spot on the top row.



To add more symbols (items to be graphed) click in the option button under the picture in the top row that represents the number of items you wish to graph. Remember, you cannot drag symbols from the middle section to the top row in a location past the selected option button! When you have finished choosing symbols click on the OK button.

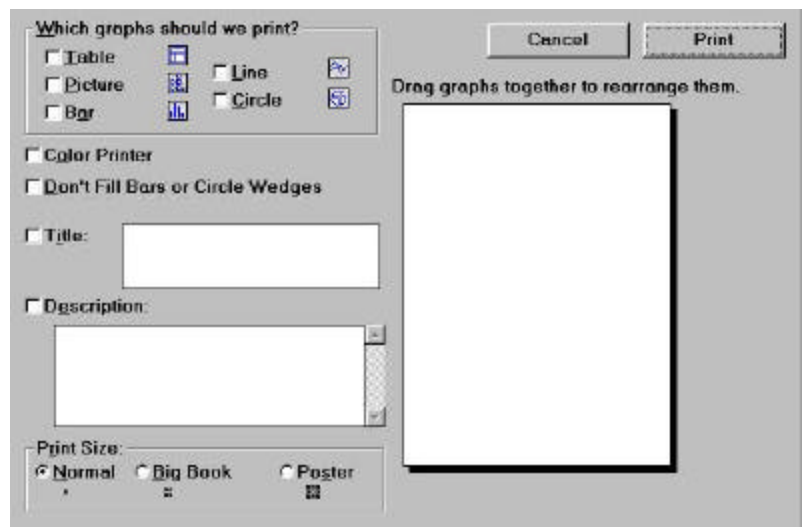
After the data (numbers) have all been entered, to actually see the graph, go to the *Graph* menu and select the *Make Another Graph* command. When this is done the screen will be split to allow the viewing of both the table and the graph.

## Printing

To print the graph, click on the *File* menu, then the *Print Graphs* command.

Check boxes are used to indicate what exactly you want to print. Clicking in the boxes will toggle the checkbox off and on. As you make your selections, a preview screen will show what will be printed.

The Title will be printed at the top of the page; the Description will be printed at the bottom of the page.



You can also make a big book or poster by simply clicking the option buttons.

## Menu Commands

**File** - New, Open, Close, Print Setup, Print Graphs

**Edit** - Copy, Paste - You can copy a graph to Word, PowerPoint, etc.

**Graph** - Make Another Graph (of the same data), Choices for the number of items to graph, Choose Scale Maximum, Choose Symbols

**Options** - Graph Horizontally, Graph Vertically, Show Bar and Line Grid, Show Axis Labels